

COMMONWEALTH PIER



A PEMBROKE PROPERTY



Overview

The Commonwealth Pier revitalization builds on a rich history to create a vibrant, mixed-use and inclusive environment for all. The project will offer enhanced and extensive public spaces with programming, an improved Harborwalk, new Class A office space, and dynamic retail space along the waterfront and Seaport Boulevard.

- 45,000 sq ft of retail
- 25,000 sq ft public plaza
- Art and cultural space





Commonwealth Pier is a 2.2M SF mixed-use development situated in the heart of Boston's Seaport District, fronting Seaport Boulevard, Congress Street, and the waterfront.

With immediate access to the BCEC, Boston's major highways, MBTA, the active waterfront, and Blue Bikes, Commonwealth Pier is one of the most accessible destinations in Boston.

- Class A office totaling 1.75M sq ft
- 428-key hotel
- 2,000+ parking spaces below-grade
- 55,000 sq ft of available retail spaces
- Pedestrian walkways connecting Seaport Boulevard to Congress Street and Summer Street
- Over 2 acres of public open spaces including Harbor Plaza, Eastport Park, Westport Park, and the Harborwalk



LOGAN INTERNATIONAL AIRPORT

ROWES WHARF TO HINGHAM

PROVINCETOWN FERRY

COMMONWEALTH PIER

SEAPORT BLVD

NORTHERN AVE

SUMMER STREET

SOUTH STATION

Getting Here

5min drive to I 93 & I 90

5min walk to Silverline



COMMONWEALTH PIER

OVERVIEW

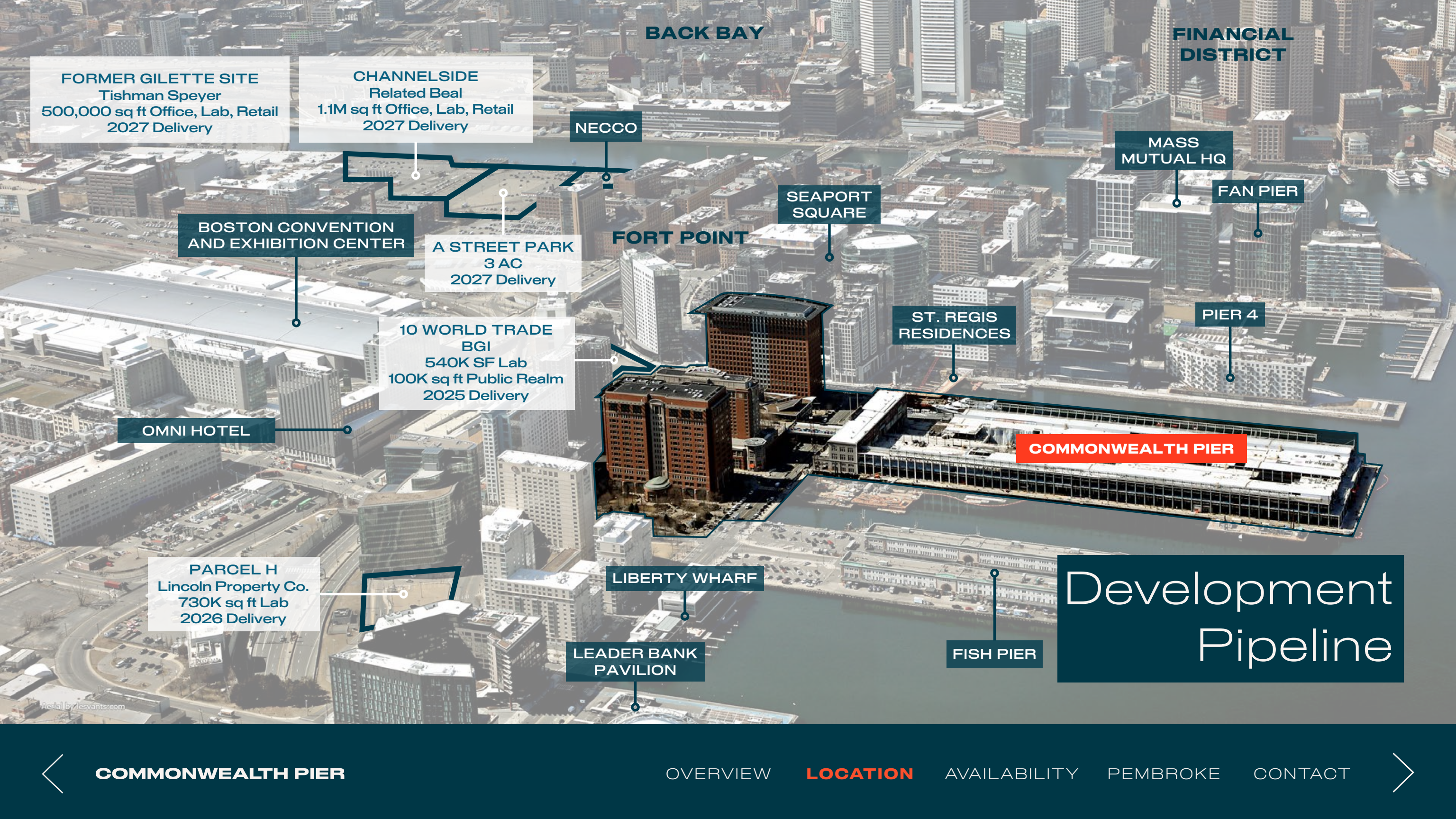
LOCATION

AVAILABILITY

PEMBROKE

CONTACT





BACK BAY

FINANCIAL DISTRICT

FORMER GILLETTE SITE
Tishman Speyer
500,000 sq ft Office, Lab, Retail
2027 Delivery

CHANNELSIDE
Related Beal
1.1M sq ft Office, Lab, Retail
2027 Delivery

NECCO

BOSTON CONVENTION
AND EXHIBITION CENTER

A STREET PARK
3 AC
2027 Delivery

FORT POINT

SEAPORT
SQUARE

MASS
MUTUAL HQ

FAN PIER

10 WORLD TRADE
BGI
540K SF Lab
100K sq ft Public Realm
2025 Delivery

ST. REGIS
RESIDENCES

PIER 4

OMNI HOTEL

COMMONWEALTH PIER

PARCEL H
Lincoln Property Co.
730K sq ft Lab
2026 Delivery

LIBERTY WHARF

Development Pipeline

LEADER BANK
PAVILION

FISH PIER

Aerial by lesvants.com

In the Neighborhood

18 million
visitors annually

12,000+
new residential units
since 2012

\$143,000
average HHI within a
mile radius

6,000+
hotel keys

260,000
daytime population
within a mile radius

Largest Employers in the Area

Amazon

Alexion

Boston
Consulting
Group

Fidelity
Investments

Goodwin

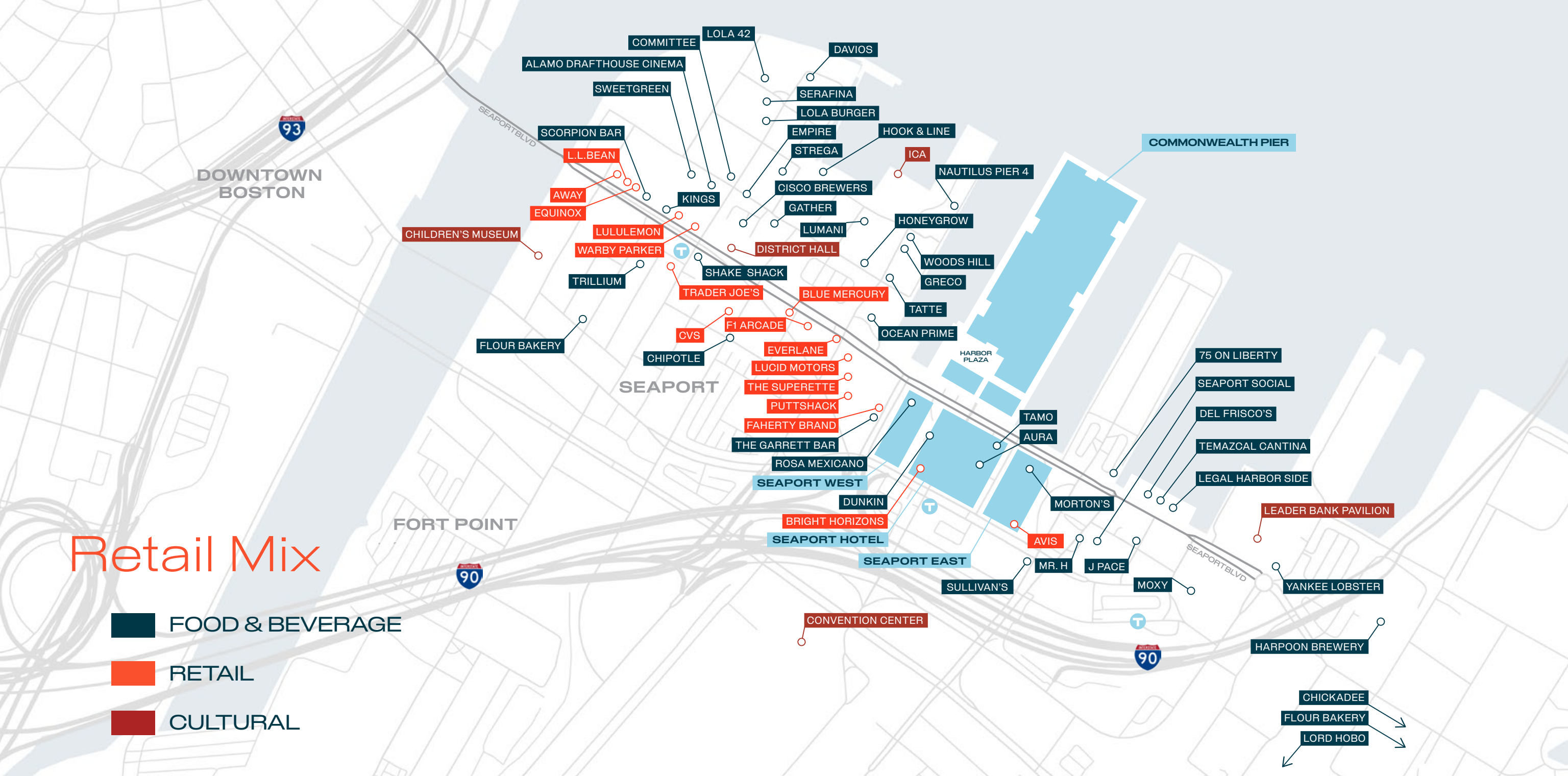
LogMeIn

PTC

PWC

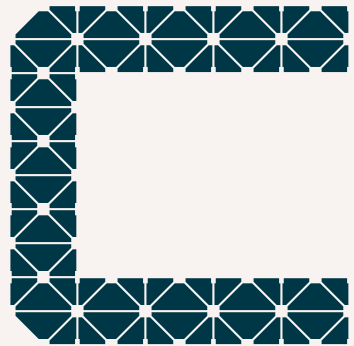
Vertex





Retail Mix

- FOOD & BEVERAGE
- RETAIL
- CULTURAL



COMMONWEALTH PIER

Look forward to exploring Commonwealth Pier to savor, sip, and relax and if you feel like visiting a little longer, enjoy a stay at the Seaport Hotel. Commonwealth Pier will host year-round events, public art, outstanding retail and dining and will create beautiful spaces to gather. Already home to Morton's Steakhouse, Rosa Mexicano, Tamo, and the Seaport Hotel. Commonwealth Pier is just getting started.



VIEW FROM SEAPORT BLVD
LOOKING AT THE LANEWAY



VIEW FROM SEAPORT BLVD
LOOKING EAST



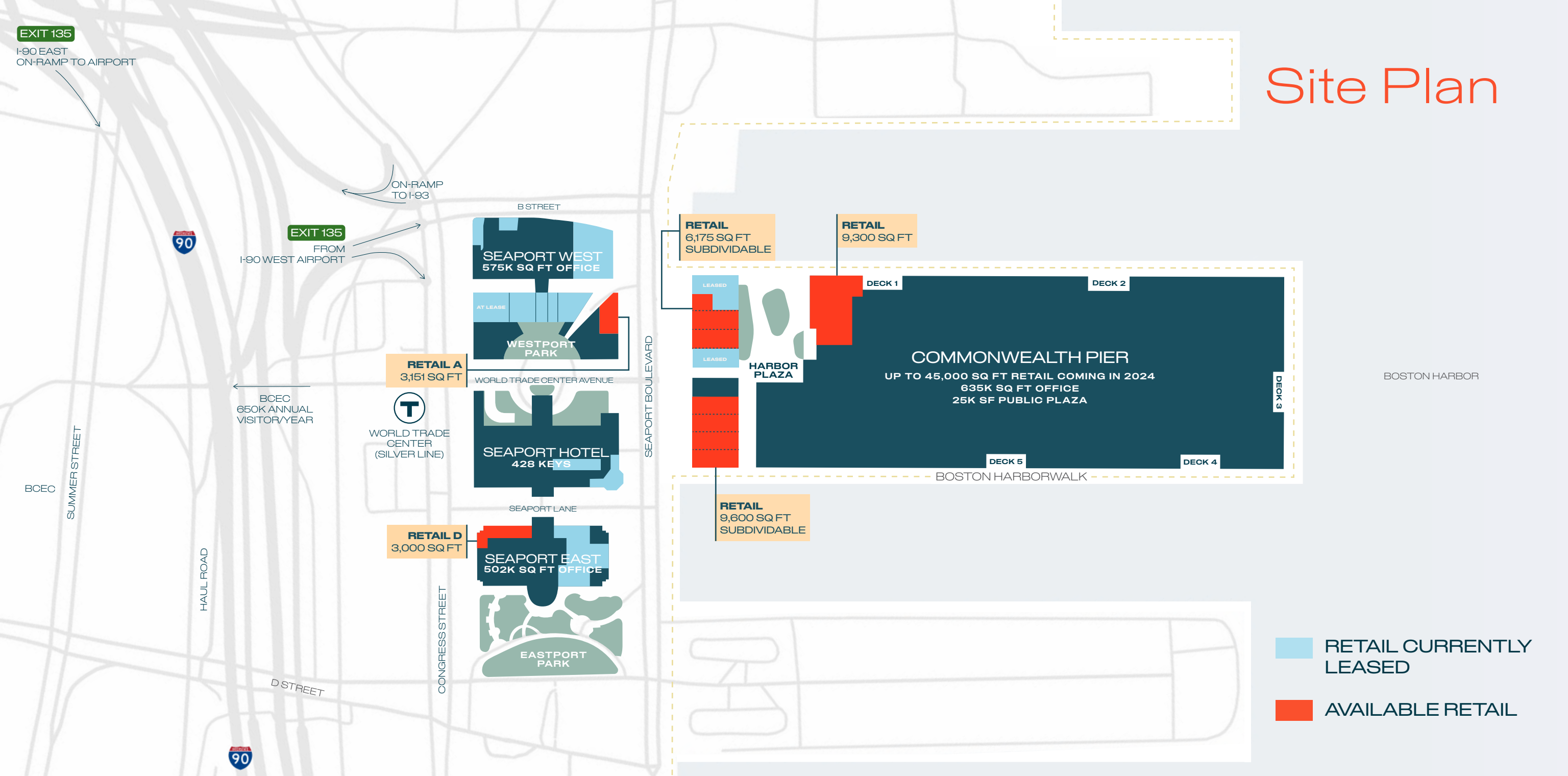
VIEW FROM SEAPORT BLVD
LOOKING NORTH

THE LANEWAY

This tree-lined pedestrian walkway will become home to a curated mix of retailers. Connecting Seaport Boulevard to Congress Street and Summer Street, and adjacent to Seaport West, exciting plans are underway to feature public art amongst a blend of shops and restaurants.



Site Plan

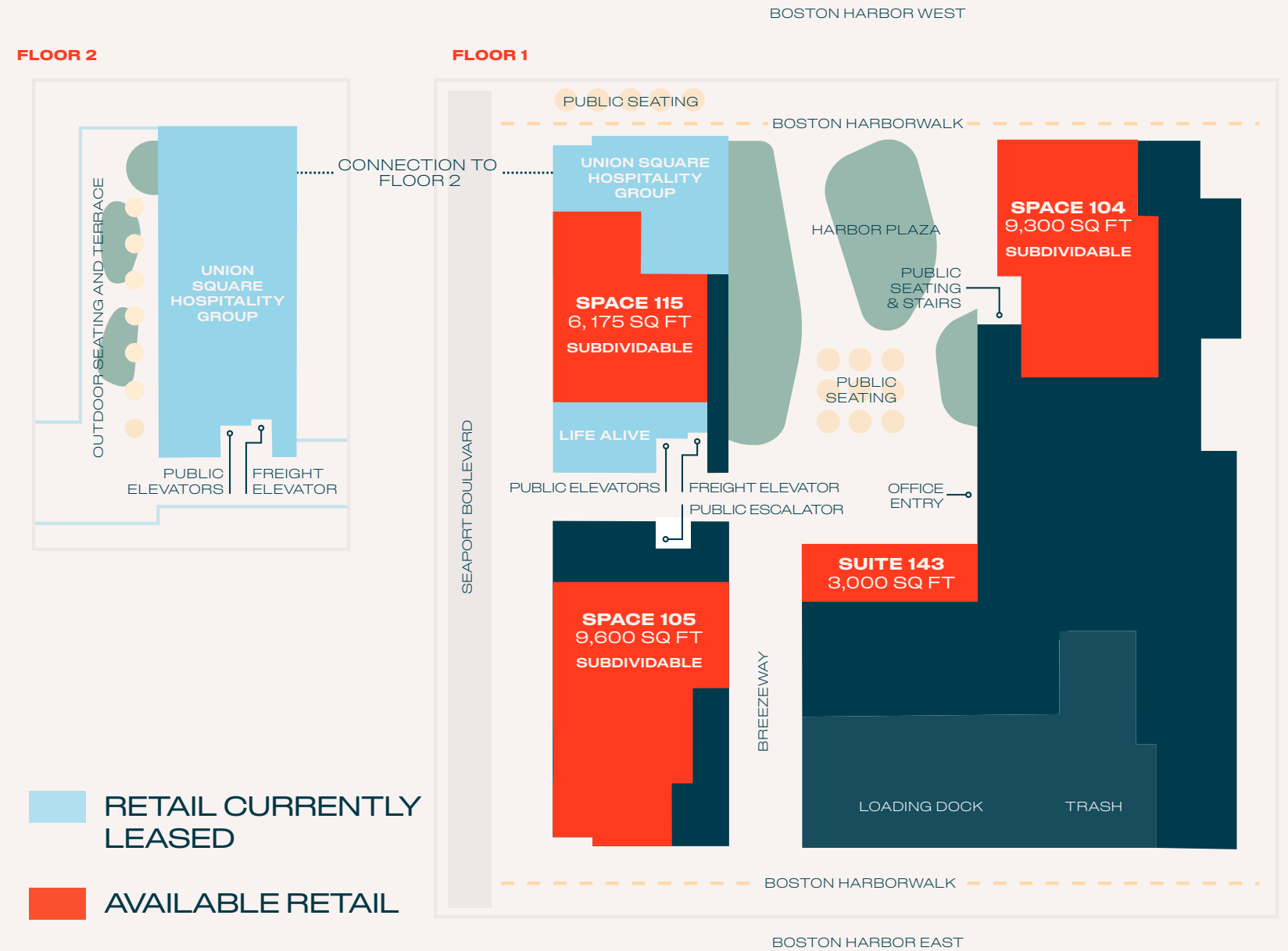


- RETAIL CURRENTLY LEASED
- AVAILABLE RETAIL

Commonwealth Pier Opportunity

A highly sought-after location in the center of the Seaport District, this waterfront destination offers multiple flagship retail and restaurant opportunities. Spaces boast high ceilings, original architecture, waterfront views, outdoor spaces, and direct access to the Harborwalk.

- Strong Visibility along Seaport Blvd
- Flexible Footprints
- 25ft+ Ceilings on Seaport Blvd
- 30ft+ Ceiling Restaurant Space
- Outdoor Seating

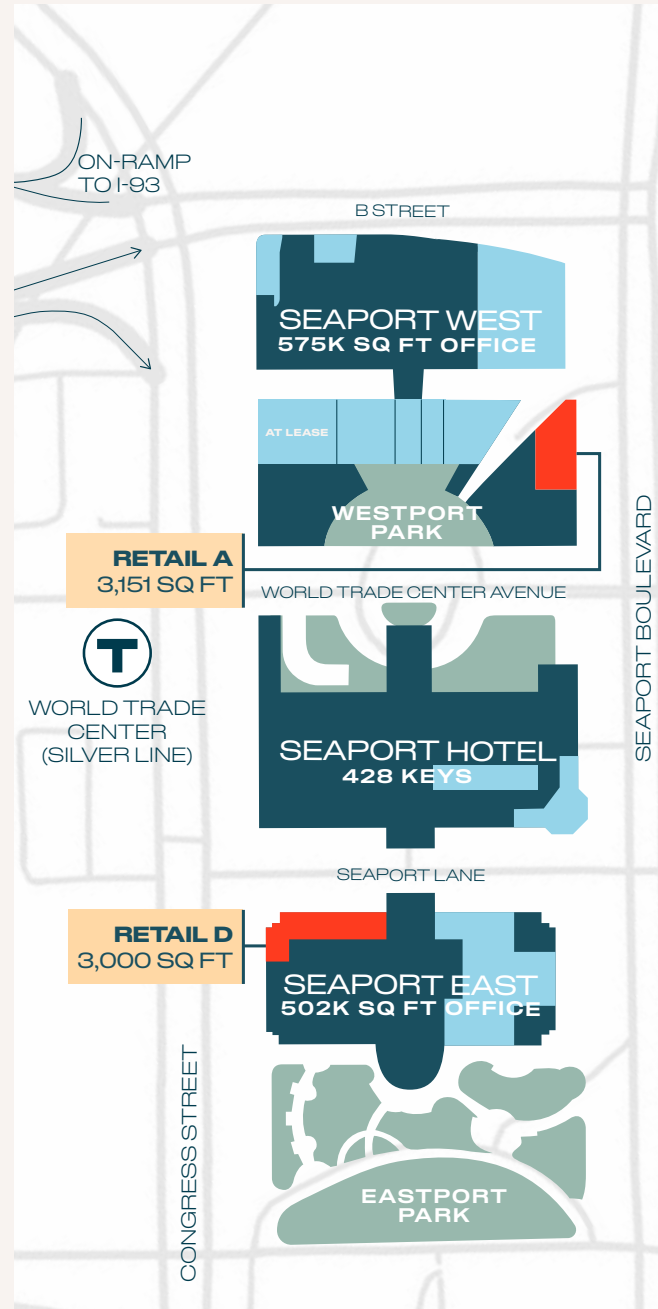


Retail A

Located on Seaport Boulevard, across from Commonwealth Pier, this is a highly visible corner retail space. Entrance along the pedestrian walkway connecting Seaport Boulevard to Congress Street next to Seaport West.

AVAILABLE NOW

- 3,151 sq ft
- 12 ft Ceiling
- Outdoor Patio Opportunity
- Restaurant Infrastructure Available

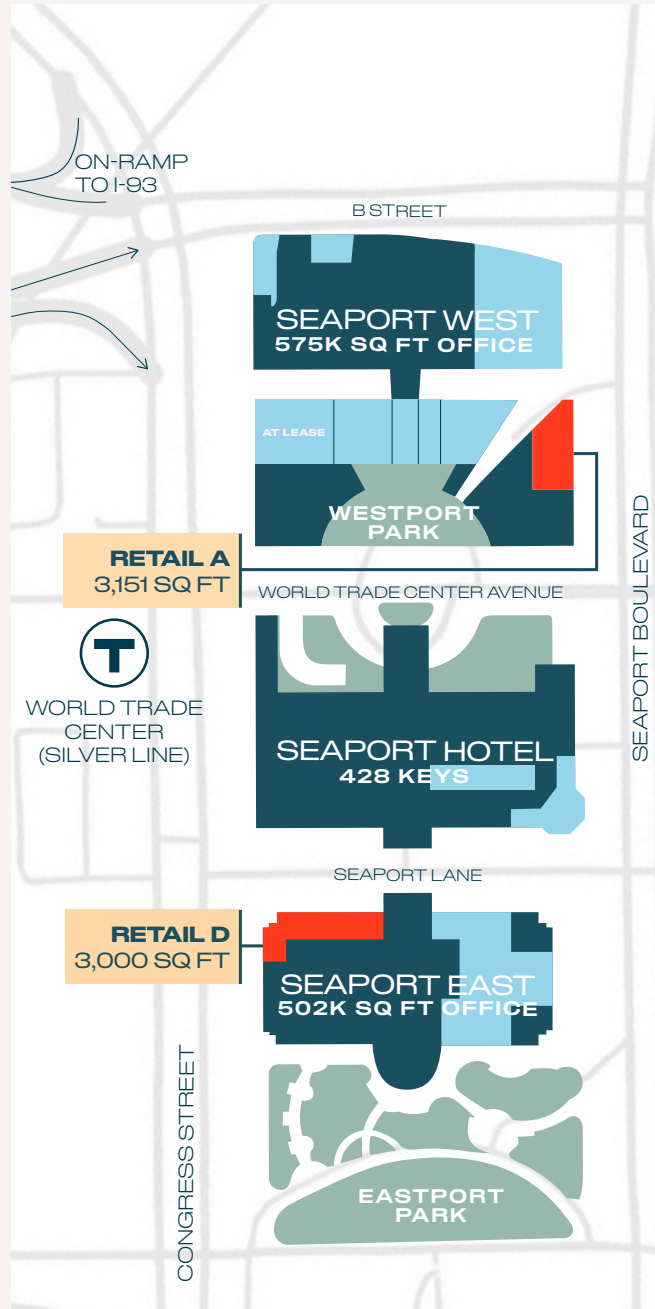
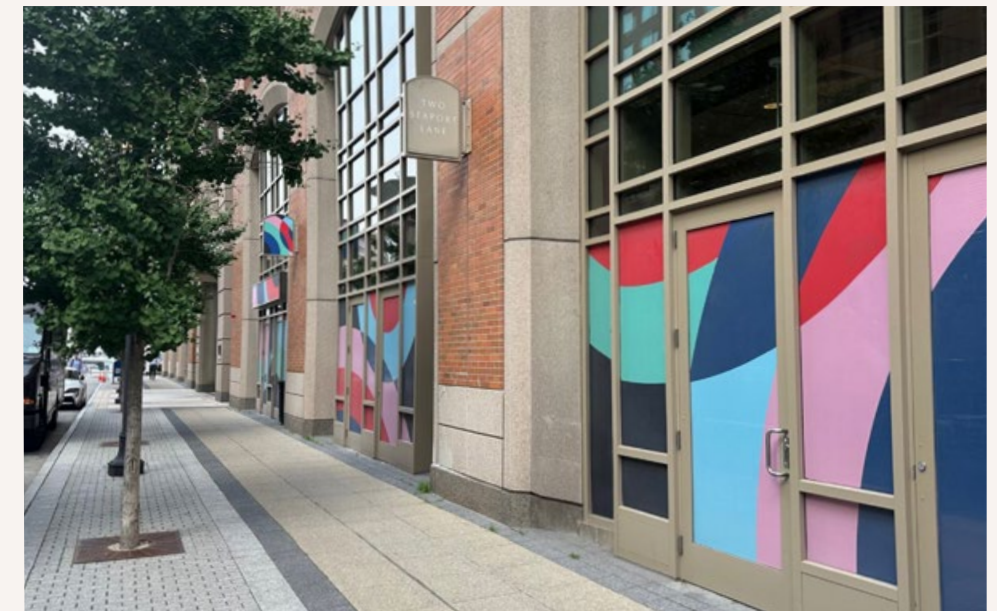


Retail D

Highly visible corner retail space at the base of the Seaport East office building. Entrance along the pedestrian walkway connection Seaport Boulevard to Congress Street. Steps from the future 10 World Trade and Commonwealth Pier.

AVAILABLE NOW

- 3,000 sq ft
- 14 ft Ceilings
- Outdoor Patio Opportunity
- Full Kitchen Infrastructure Available
- Connection to Newly Renovated Lobby

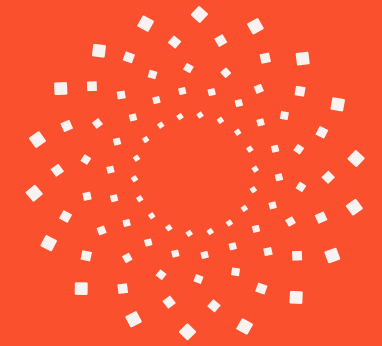




Thoughtful Property

We don't believe one size fits all. We build lasting relationships that give us time to understand your challenges, and then develop solutions that respond to your needs.

[PEMBROKE.COM](https://www.pembroke.com)



PEMBROKE

Established in 1997

Hands-on asset management

8 Pembroke offices in 14
global cities

40 operating assets

4.6M sq ft of development

8.6M sq ft under
management in key markets

International and local expertise

Office, residential, and mixed use
sectors



[COMMONWEALTH PIER](#)

[OVERVIEW](#)

[LOCATION](#)

[AVAILABILITY](#)

[PEMBROKE](#)

[CONTACT](#)



COMMONWEALTH PIER

For retail leasing inquiries:

ANGELA VANARSDALE

E: angela@graffito.com
M: 978.766.5142

TANIA CELESTIN

E: tania@graffito.com
M: 781.510.1307

DAVE DOWNING

E: dave@graffito.com
M: 207.233.8022

JESSE BAERKAHN

E: jesse@graffito.com
M: 617.669.6171