

CAMBRIDGE MARKET CENTRAL RETAIL OPPORTUNITIES



PROJECT ORIENTATION

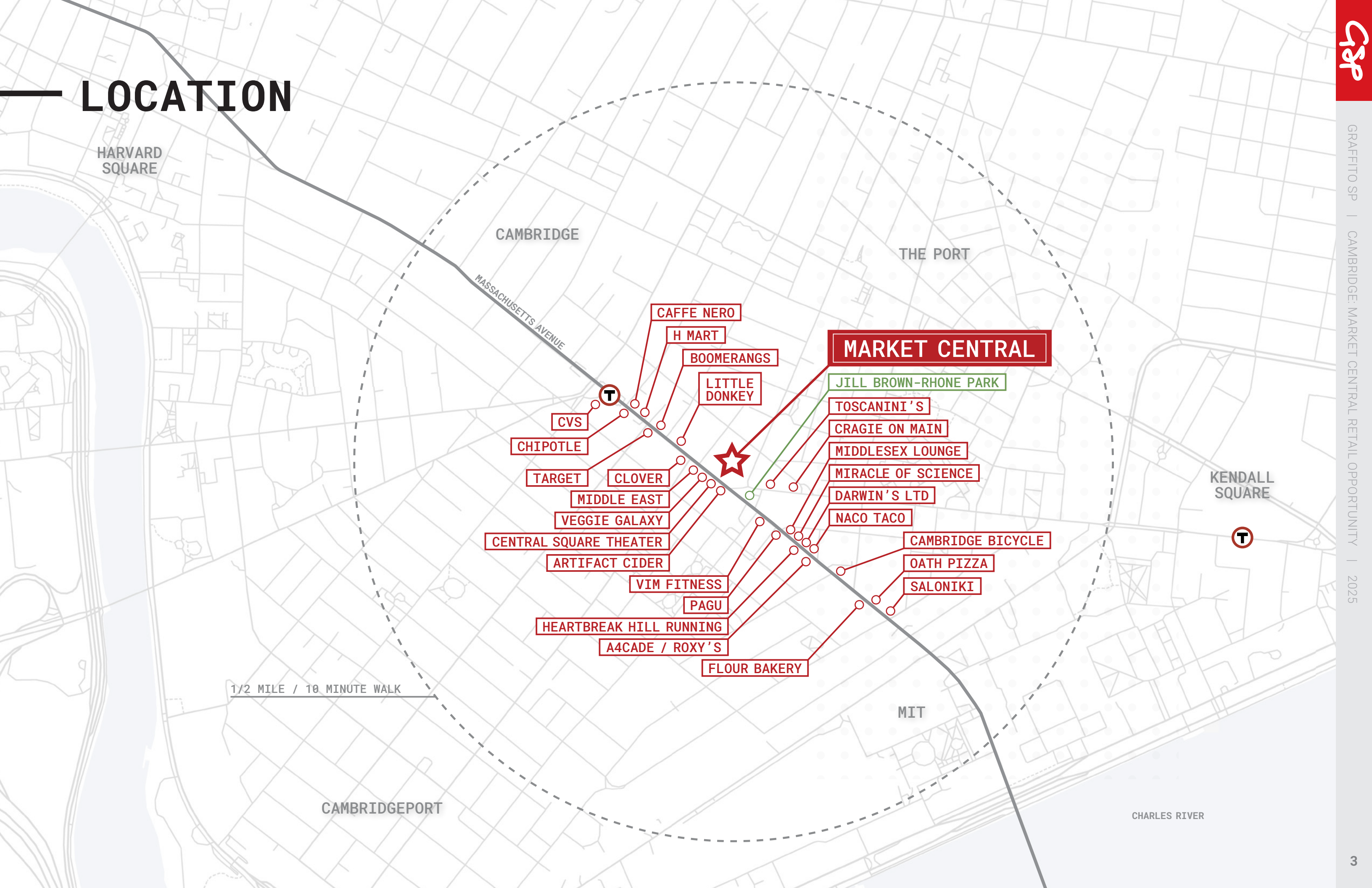
“Central Square is the epitome of urbanism: no other district of similar size in Boston offers the same diversity and intensity of activities. In all of the Boston area, Central is truly special.”

- Red Ribbon Report

Market Central is uniquely positioned in the heart of Central Square where Massachusetts Avenue meets Main Street. This 308-unit mixed-use residential project includes 15,000 sf of ground floor retail fronting the Jill Brown Rhone Park along Massachusetts Avenue and Columbia Street.



LOCATION



HARVARD
SQUARE

CAMBRIDGE

THE PORT

MASSACHUSETTS AVENUE

CAFFE NERO

H MART

BOOMERANGS

LITTLE
DONKEY

MARKET CENTRAL

JILL BROWN-RHONE PARK

TOSCANINI'S

CRAGIE ON MAIN

MIDDLESEX LOUNGE

MIRACLE OF SCIENCE

DARWIN'S LTD

NACO TACO

CAMBRIDGE BICYCLE

OATH PIZZA

SALONIKI

KENDALL
SQUARE

MIT

CHARLES RIVER

CAMBRIDGEPORT

1/2 MILE / 10 MINUTE WALK

IN THE NEIGHBORHOOD



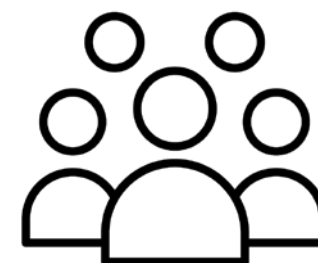
1,300

businesses within
a half-mile radius



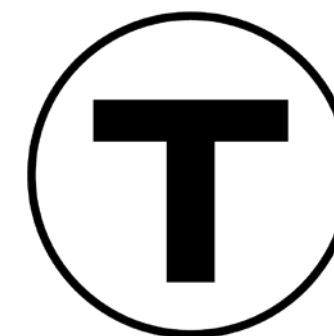
14,000

employees within
a half-mile radius



21,100

people living within
a half-mile radius



15,500

daily red line ridership at
the Central Square station

LARGEST EMPLOYERS:





Vibrant ground floor retail along Massachusetts Avenue



Neighborhood retail along Columbia St.

THE OPPORTUNITY

Highly desirable 450 sf neighborhood retail opportunity along the retail arcade connecting the The Port neighborhood and Massachusetts Ave. Easy access to the subway, public parking lots and, protected bike paths.



AVAILABLE NOW



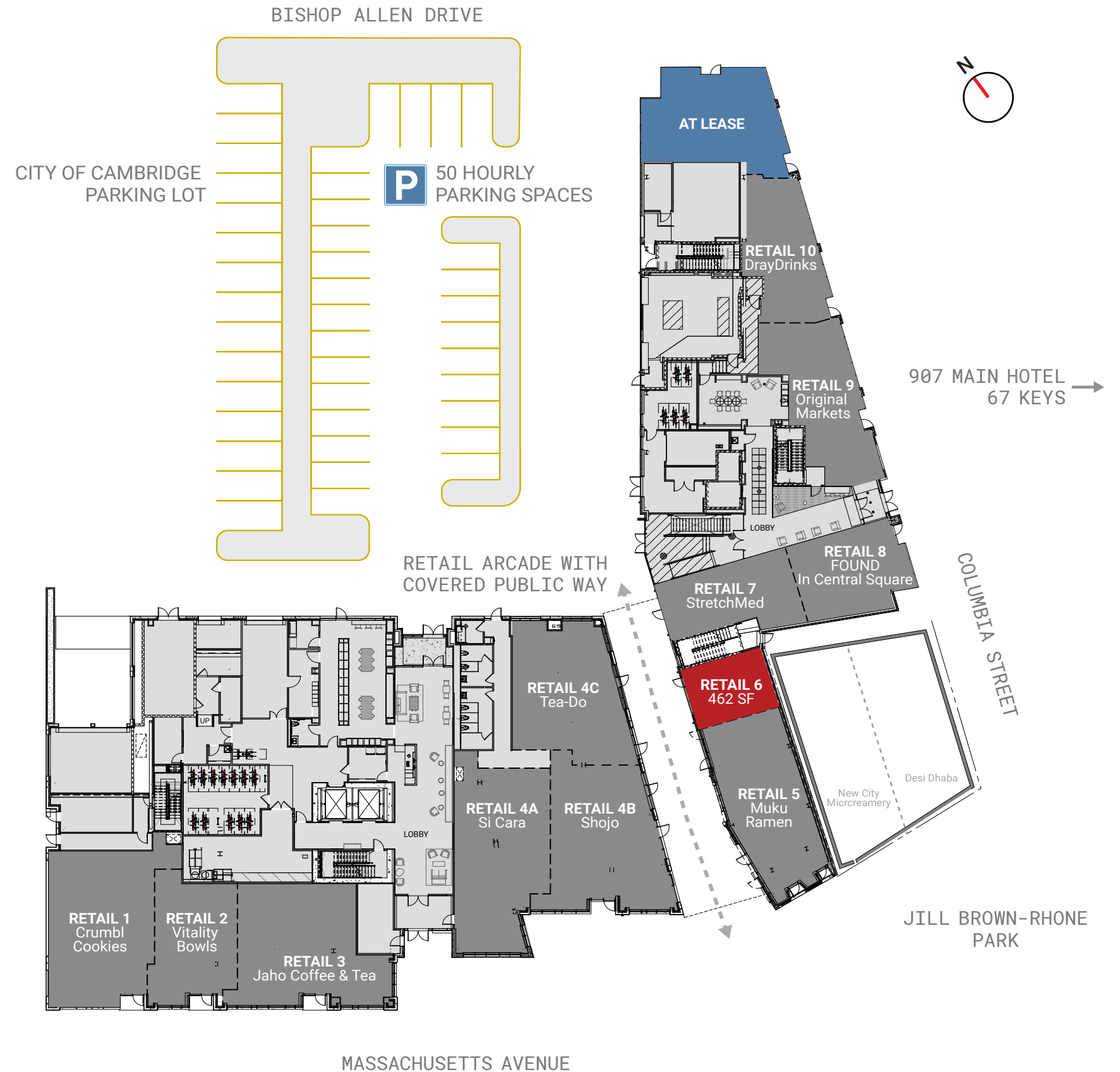
12' + CEILINGS



TURNKEY RETAIL SPACES



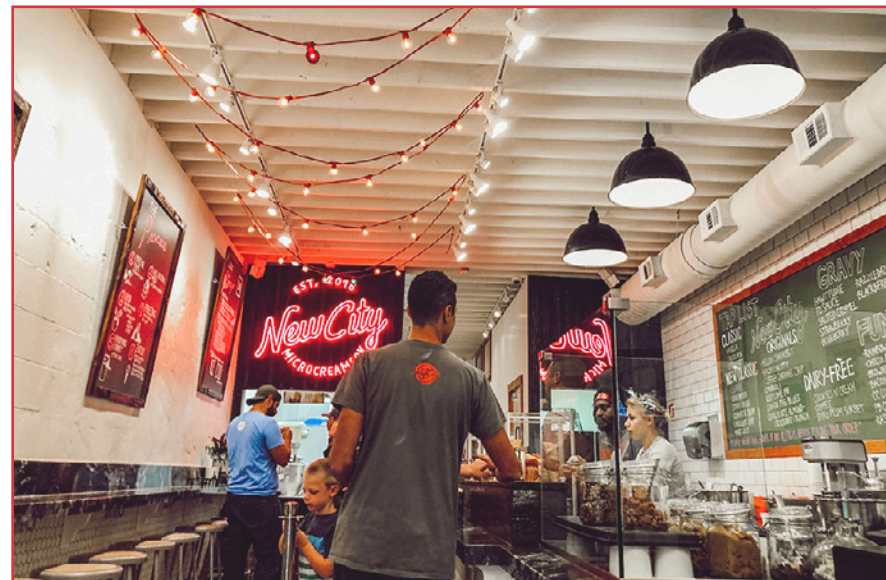
VISABLE SIGNAGE OPPORTUNITIES



LET'S TALK

Graffito is seeking a mix of unique, independent food, retail, and service businesses to join the incredible mix of ground floor tenants open at Market Central.

NOW AVAILABLE!



Dave Downing
dave@graffito.com
617.401.2871

Tania Celestin
tania@graffito.com
781.510.1307