

BOSTON LANDING RESTAURANT + RETAIL OPPORTUNITIES



PROJECT ORIENTATION

 boston_landing  bostonlanding1

Boston Landing is a mixed-use project parallel to the Mass Pike, consisting of approximately 1.76MSF and located just minutes from Downtown Boston.

The development is home to New Balance's HQ, the Boston Bruins and Celtics practice facilities, 750,000 SF of office/lab, 295-residential units and over 80,000 SF of retail at Boston Landing. The TRACK at new balance has a capacity for a 5,000 spectator sports venue, and the Roadrunner Live Music Venue, operated by The Bowery Presents, hosts up to 3,500 people.



9,500

residents living within
a 1/2 miles radius



2,000

businesses within
a 1-mile radius



9,400

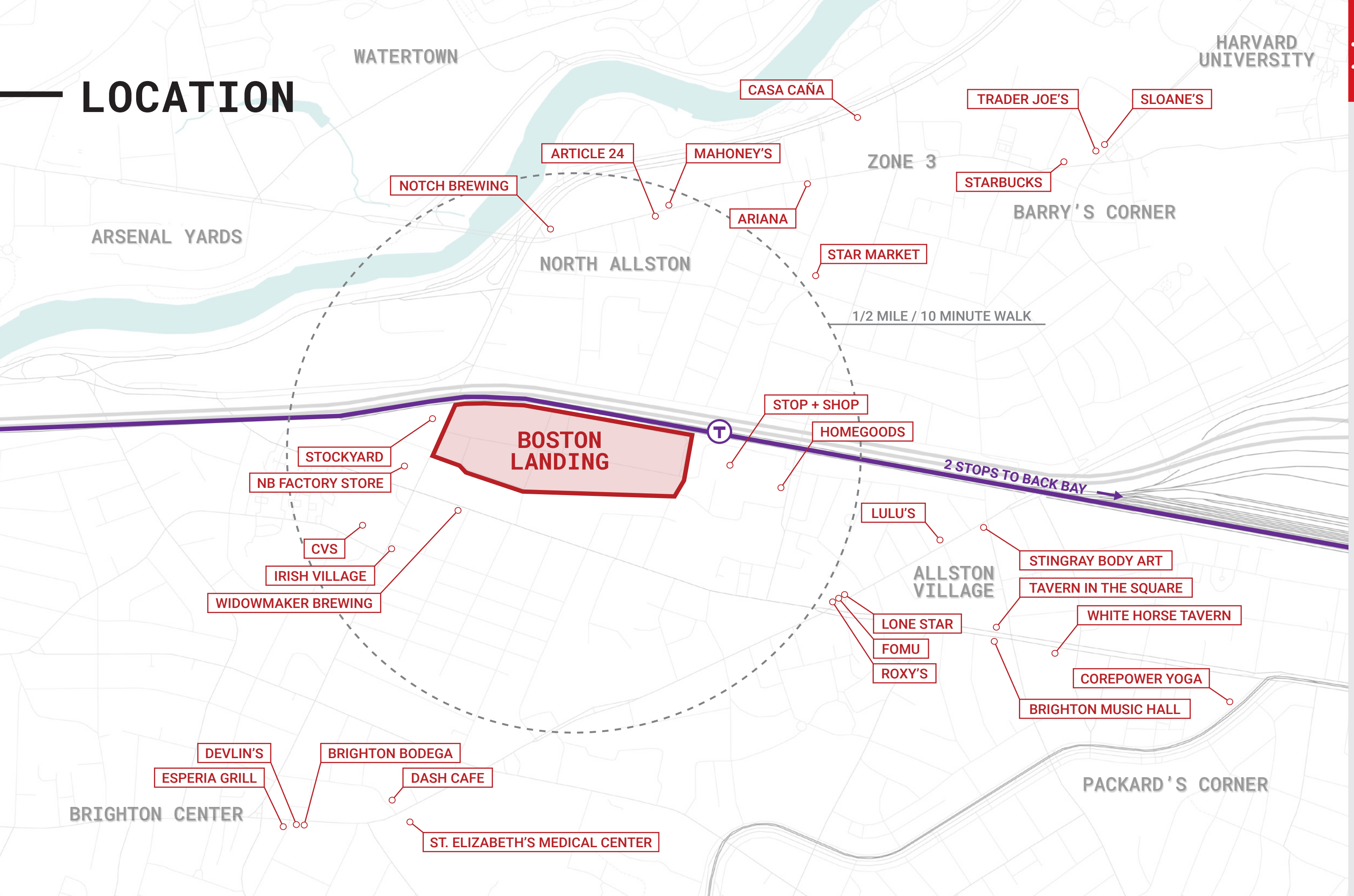
employees within
a 1/2 mile radius



19,000

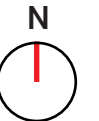
daily Purple Line
ridership

LOCATION



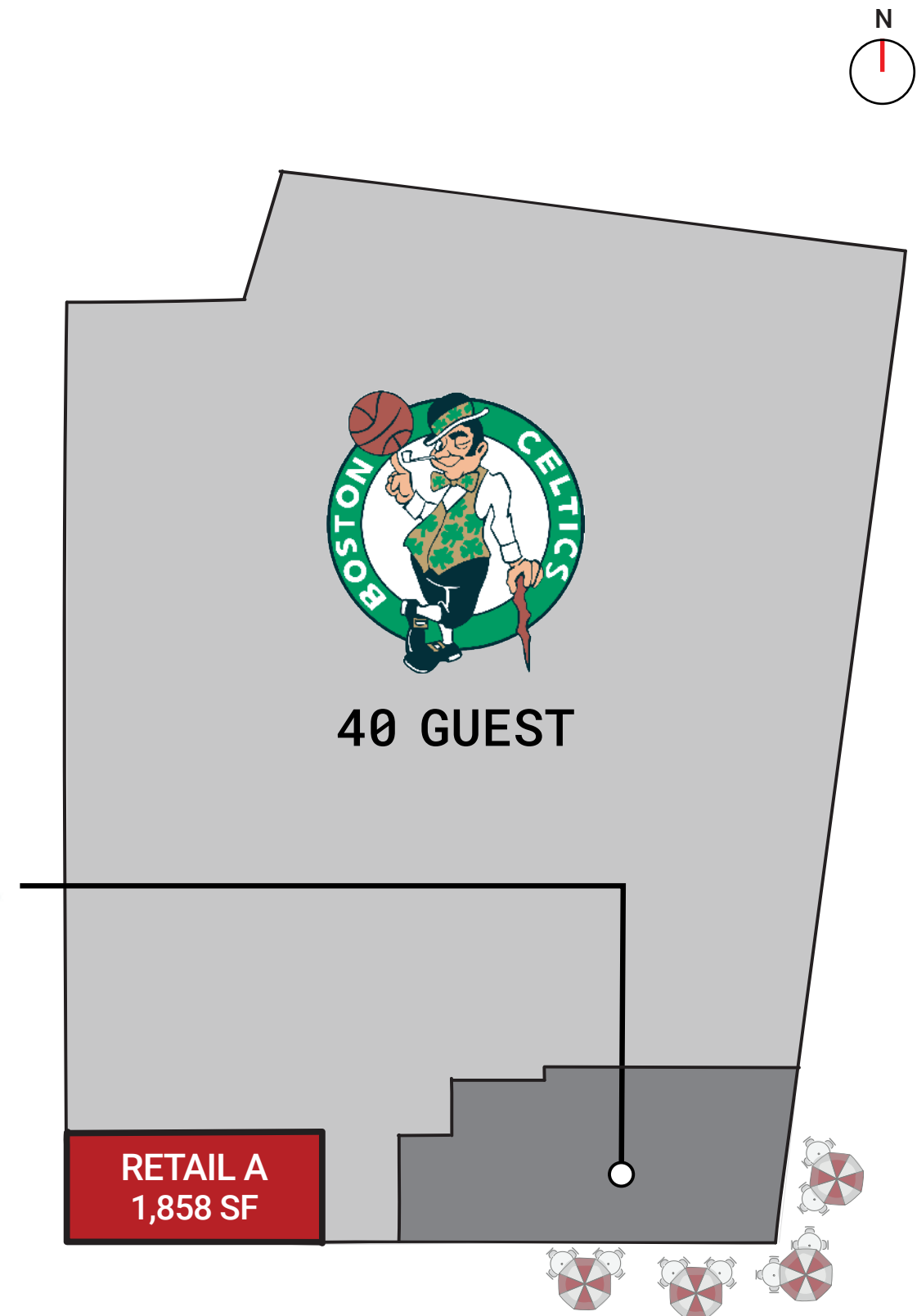
SITE PLAN

- Retail Available Now
- Leased Retail
- Future Development



AUERBACH CENTER: 40 GUEST ST

40 Guest Street is a 135,000 sf building that is home to the Celtics Practice and Training Facility and includes 84,000 sf of lab innovation space occupied by Smart Labs. Action Athletics currently anchors the retail corner of Guest and Life Street and there is one remaining space of 1,858 SF available.



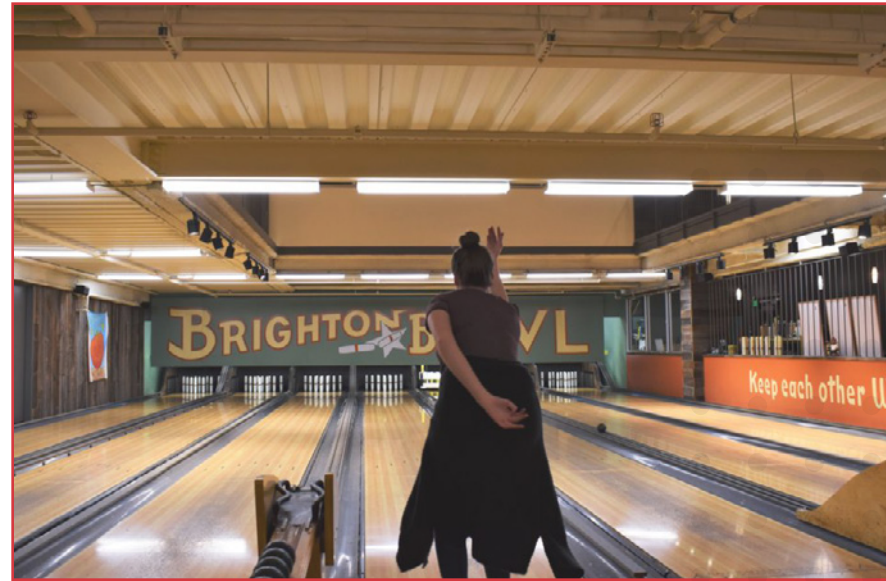
— LANTERA: 125 GUEST ST

Lantera includes 295 luxury residential units above a podium of approximately 16,500 sf of ground floor retail. The retail space is located directly across from the New Balance World Headquarter building and New Balance Flagship store. Retail opportunities range from approximately 1,000-5,300 sf with ability to accommodate a variety of restaurant, service and retail uses.



LET'S TALK

Graffito is seeking a dynamic mix of independent restaurants, services and retail uses to complement the exciting new retail tenants open and on the way at Boston Landing.



Dave Downing
dave@graffito.com
617.401.2871

Tania Celestin
tania@graffito.com
781.510.1307

Jesse Baerkahn
jesse@graffito.com
617.669.6171